



Brookfield Road, London, W4  
Guide Price £1,349,500

**WHITMAN & CO.**  
SALES · LETTINGS · COMMERCIAL



An exceptional end-of-terrace period property with ground floor and loft extensions, offering 1,346 sqft of living space and the perfect balance of living and entertaining areas, located on a quiet residential street just north of the Bedford Park conservation area. The property is finished to an incredibly high specification throughout and benefits from an abundance of natural light on all floors. The accommodation comprises a 24' double reception room with bi-fold doors leading onto a secluded south-facing garden, a fully fitted kitchen, a large master bedroom with an ensuite shower room, two further bedrooms, a family bathroom, a study/small single bedroom, and a guest WC. Brookfield Road is a short walk from Turnham Green station and the shops, cafés, and restaurants of Chiswick High Road, while also being close to several parks. Transport links include the tube, local bus routes, and the A4/M4 for access in and out of London.



# Brookfield Road, W4

Approximate gross internal area

125.04 sq m / 1346 sq ft

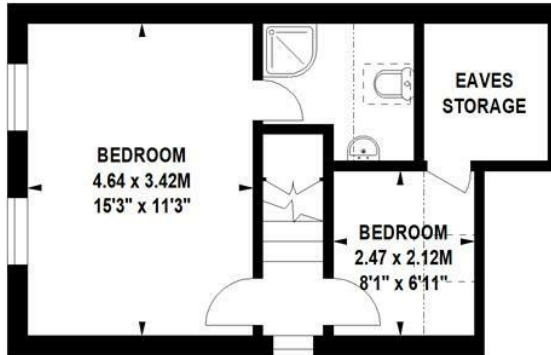
(Including Eaves Storage)

Eaves Storage

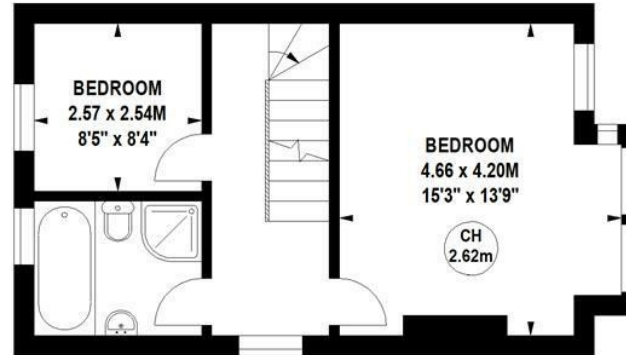
3.81 sq m / 41 sq ft



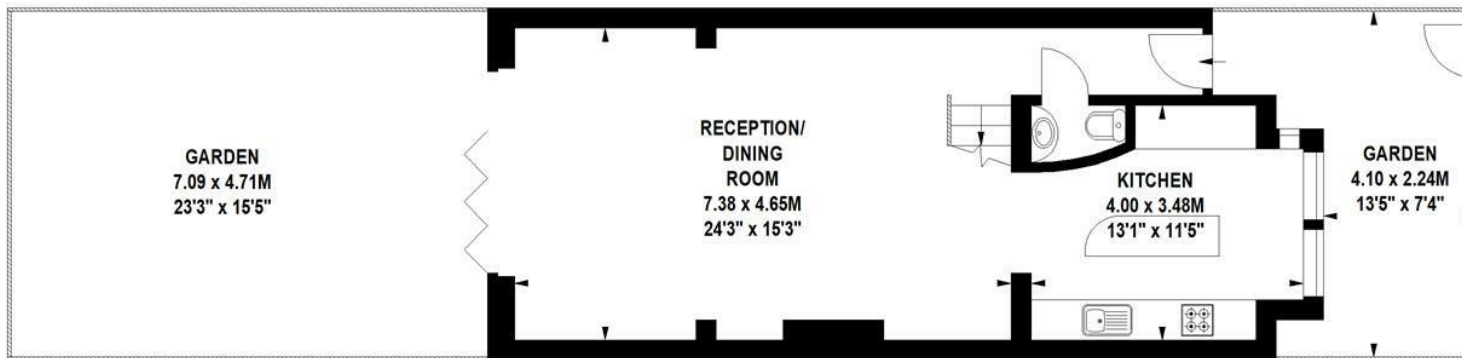
Key :  
CH - Ceiling Height



Second Floor



First Floor



Ground Floor

Not to scale, for guidance only and must not be relied upon as a statement of fact.  
All measurements and areas are approximate only

- Sought after location
- Fabulous rear extension
- Fantastic transport links

- End of terrace
- Landscaped south-facing garden
- Quiet residential road

Tenure - Freehold  
Local Authority - Ealing  
Council Tax - Band F

